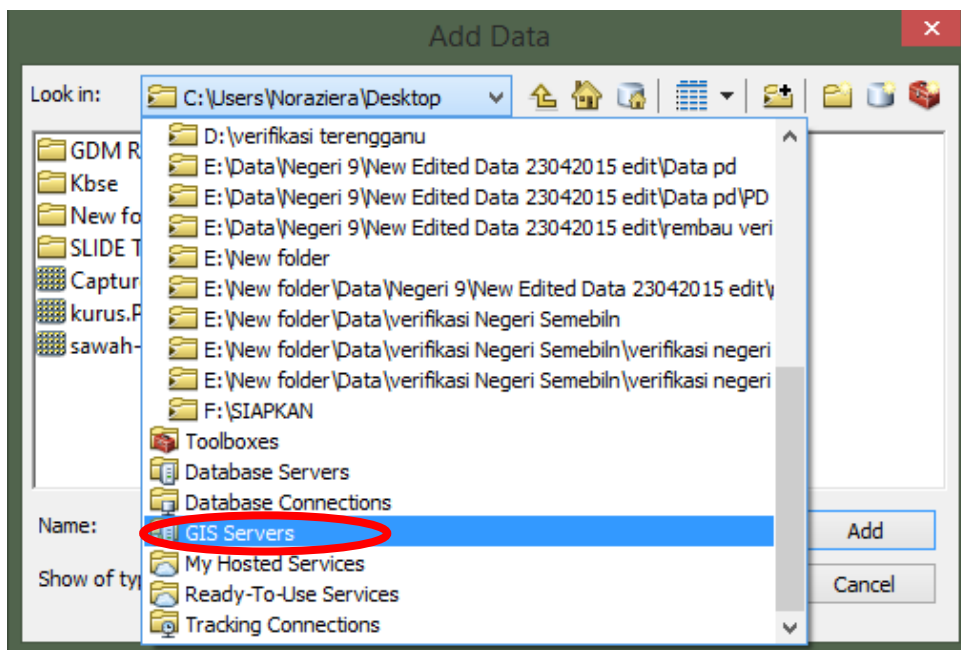
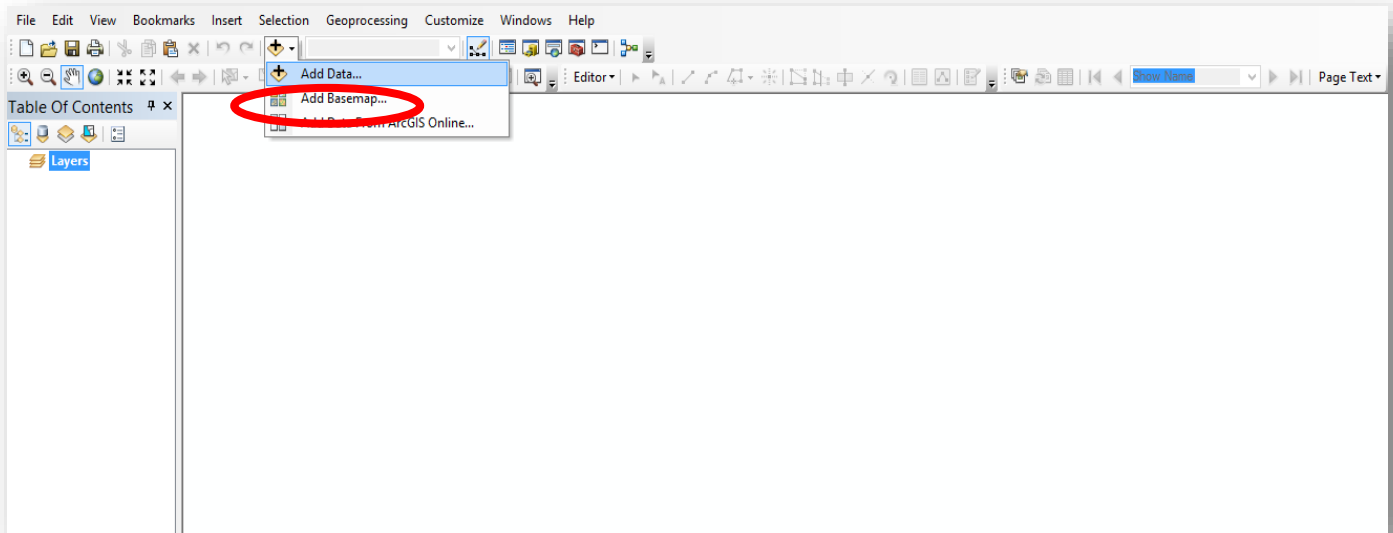
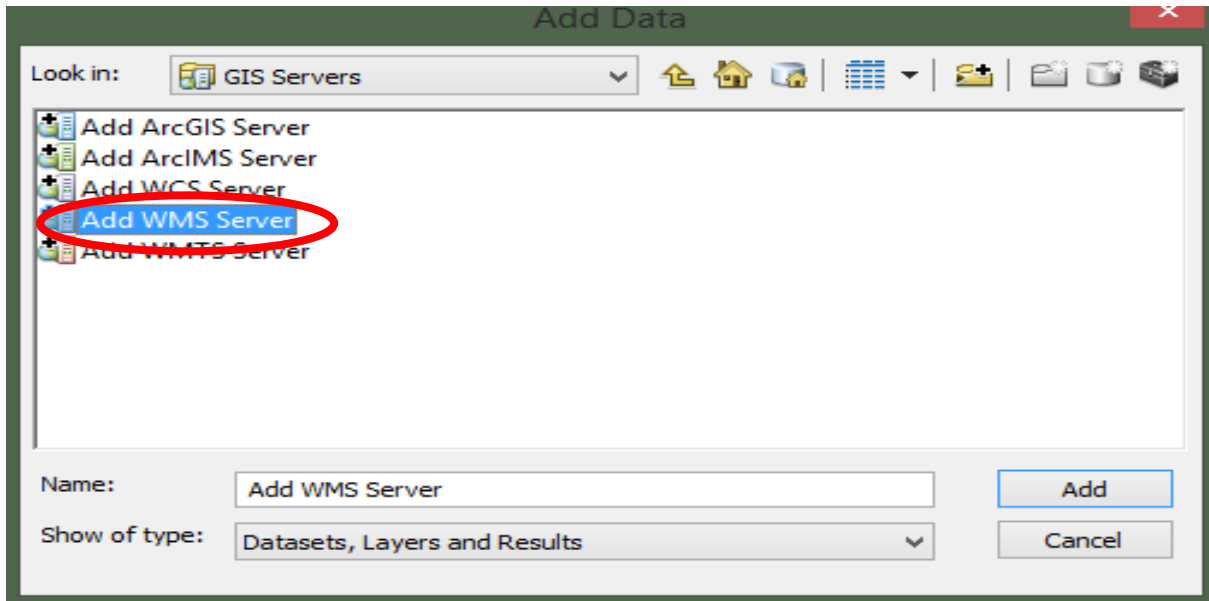


Arcgis Desktop

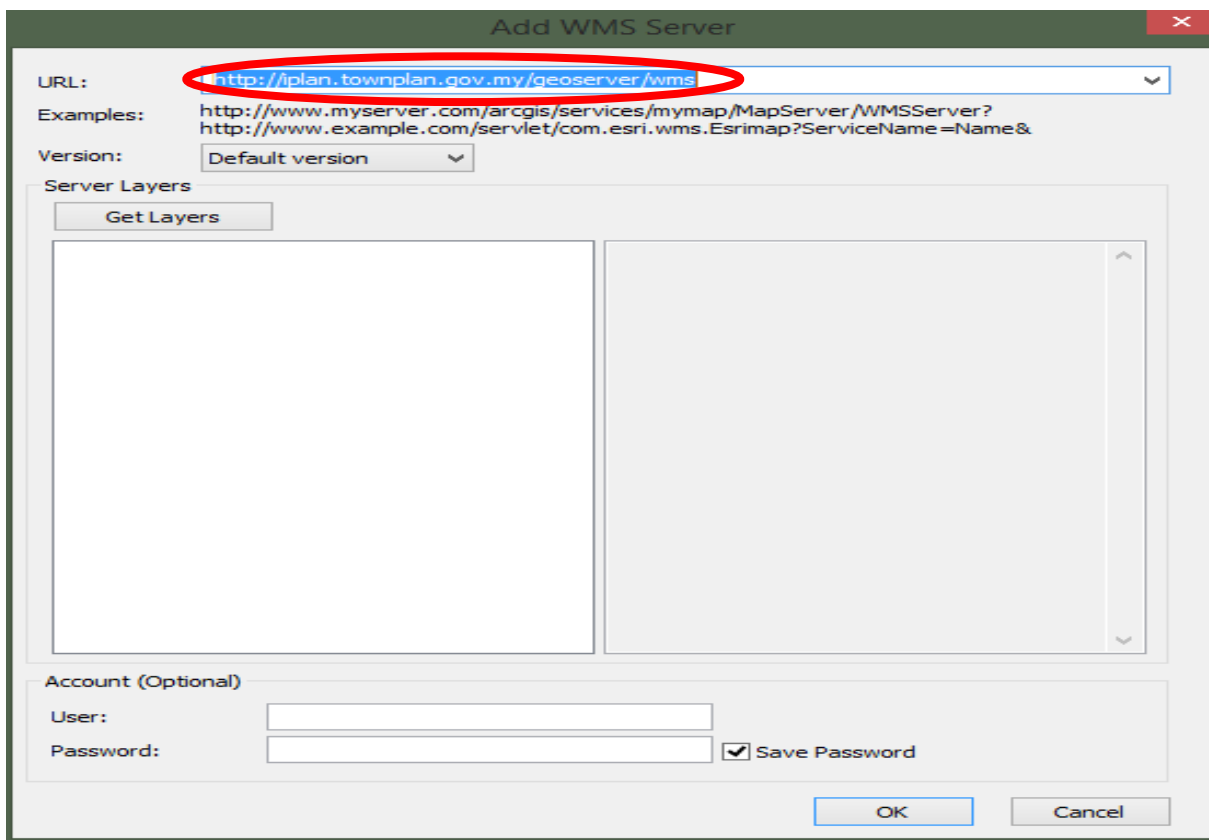
Langkah 1: Pilih 'Add Data' dan pilih GIS Servers. Kemudian 'Add WMS Server' dan klik 'Add'.





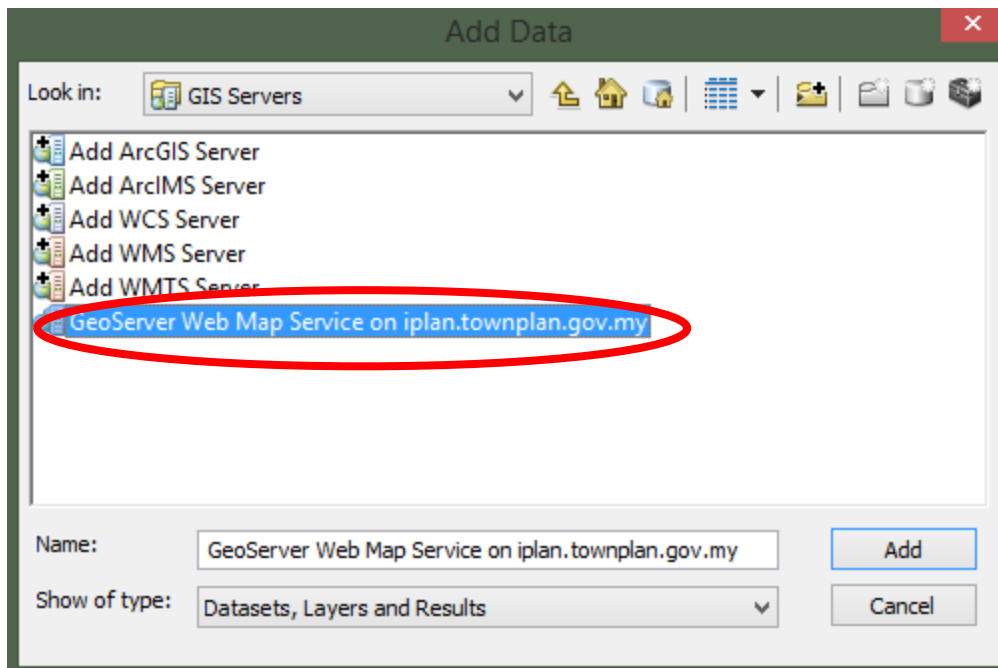
Rajah 1: Add WMS Server

Pada ruangan url masukkan <http://iplan.townplan.gov.my/geoserver/wms> dan klik OK



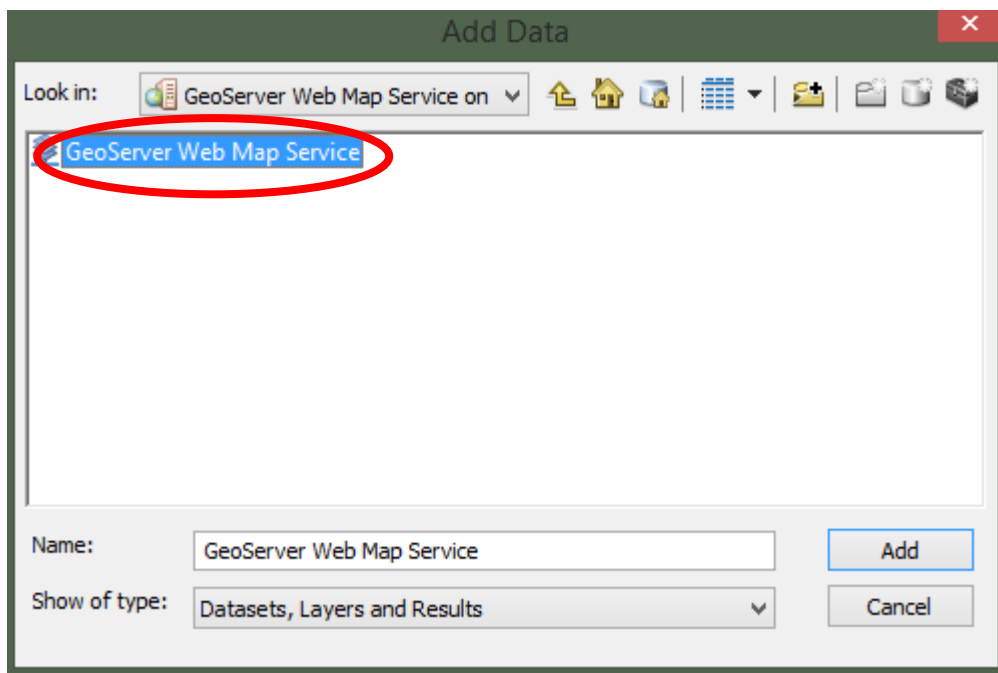
Rajah 2: Masukkan URL

Langkah 1: Paparan seperti rajah 3 akan dipaparkan. Pilih “GeoServer Web Map Service on iplan.townplan.gov.my” kemudian klik ‘Add’.

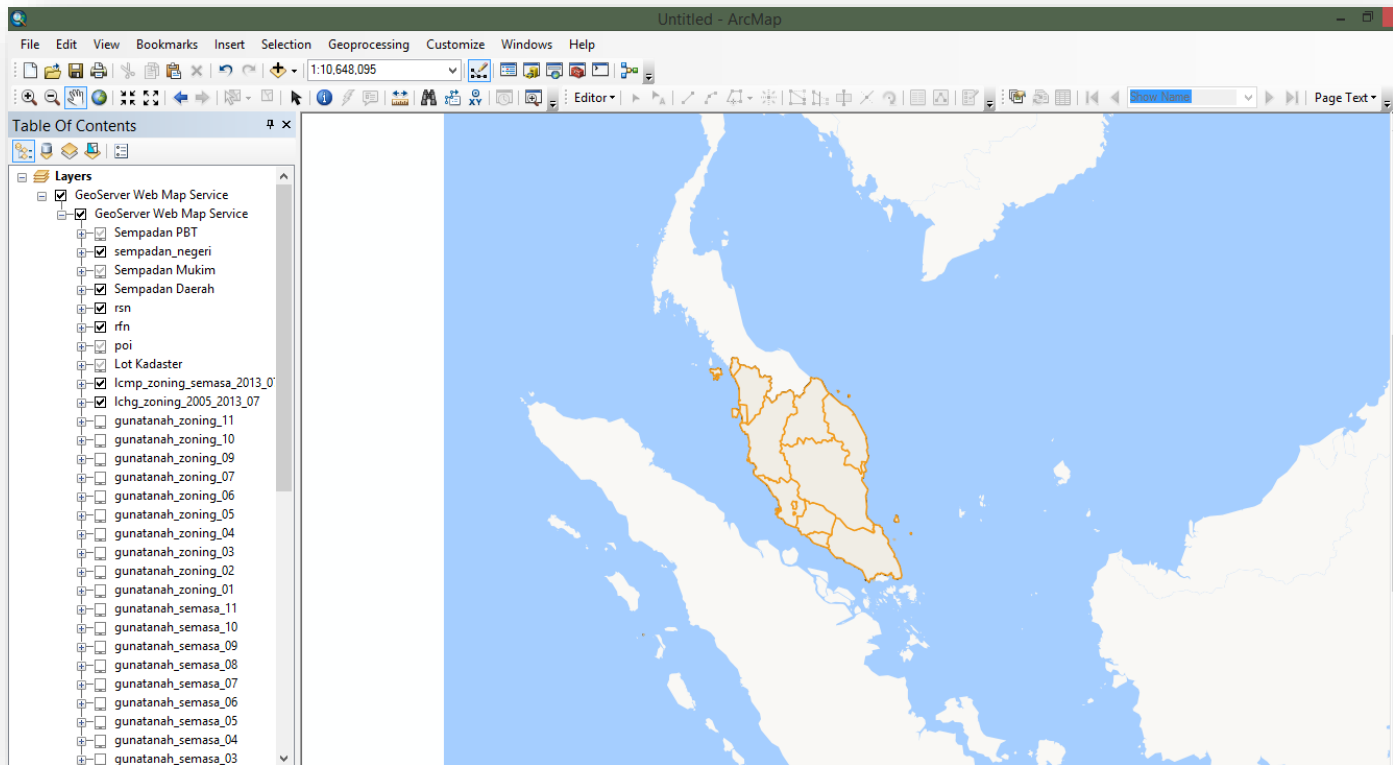


Rajah 3: GeoServer Web Map Service on iplan.townplan.gov.my

Kemudian pilih lagi GeServer Web Map Services



Rajah 4 GeoServer Web Map Service



Rajah 5: Paparan GeoServer Map Service dipaparkan